

POWERED BY GENERATIONS
FARMING FOR THE FUTURE.
SEED GUIDE





3 WHEAT	13 COVER CROPS
7 FORAGE SORGHUM	16 ALFALFA
10 GRAIN SORGHUM	18 GRASSES
12 CEREALS	19 SUNFLOWERS & GARDEN

Sales and Production Team

Adrian Polansky President | 785-845-2933

Adam Polansky Seed Conditioning Manager

Christian Tipton Operations Manager | 785-955-0611

Pat Baxa Central & Northern Kansas | 785-527-0457

Katelyn Durst Eastern Kansas | 785-229-2681

Larry Heier Western Kansas | 785-673-9491

Jacob Schmeidler South Central Kansas & Oklahoma | 785-259-5291

Ross Montgomery Western Nebraska | 402-746-4429

Eric Johnson Eastern Nebraska & Iowa | 402-719-9577

Allayna Ohlde East Warehouse Manager & In-House Sales | 785-614-0669

Kate Reedy Cover Crop Warehouse Manager & In-House Sales | 785-275-2177

This publication is for informational purposes only. The product descriptions and ratings, based on field observations and research from multiple years and locations, may not be entirely consistent when the same products are grown under other conditions. Please read the tags and labels on Polansky Seed, Inc., seed bags and other seed containers for they contain important conditions of sale, including limitations of warranty and remedy. Copyright 2025, Polansky Seed, Inc.

NEXGROW® is a registered trademark of Forage Genetics International. AgriPro® and the Syngenta logo are trademarks of a Syngenta Group Company.



POLANSKY EXCLUSIVE WHEAT VARIETIES



Rock Star has been a standout variety since its release in 2019. It has an exceptional disease package with excellent field performance, showing higher yield potential. It is a medium maturing variety that has great straw strength. It also has a high tolerance for FHB making it a great option behind corn.

- Consistent High Yield Performance
- Excellent Plant Health
- Wide Area of Adaptation



Paradise is designed for the Central Corridor. This is a bronze chaffed variety that stands out in a high-yield potential package. It has an upright growth habit, with very good fall grazing potential. Paradise can be planted on fallow ground, after wheat, or after soybeans.

- High Yield Potential
- Excellent Disease Package
- Excellent Milling and Baking Qualities



High Country is an earlier maturing variety showing its best yield potential from the central corridor west to Colorado. Its package also includes very good winter hardiness that allows it to travel up into Nebraska. High Country has a good disease package and very good drought tolerance.

- Very Drought Tolerant
- Resistant to Leaf and Stem Rust
- Very Good Test Weight and Shatter Resistance



Golden Hawk is a 2024 release from Polansky Seed. It is a medium maturity winter wheat with a wide area of adaptation. Golden Hawk has an exceptional disease package with resistance to FHB and very good Aluminum tolerance in low pH soils. Golden Hawk can be planted behind corn, soybeans, or wheat.

- Consistency and Yield
- Excellent Plant Health
- Wide Area of Adaptation
- Most consistent yielder in 2024 KSU plots

KS PROVIDENCE



WHEAT
ALLIANCE

- Extremely high yielding variety with good leaf and stem rust resistance
- High tillering and winter hardiness
- Great straw strength

AP PROLIFIC

AgriPro **syngenta**

- High tillering potential
- Very good fusarium head blight tolerance
- Excellent leaf and stripe rust tolerance
- Low PH tolerance
- Excellent after Corn

AP BIGFOOT

AgriPro **syngenta**

- Strong yield data and test weights across the region
- Low PH soils tolerance
- Above average WSMV tolerance
- Very Good leaf stripe tolerance
- Superior performance in dryland systems

SY WOLVERINE

AgriPro **syngenta**

- Outstanding yield performance
- Good wheat streak tolerance as well as tan spot
- Strong leaf and stem rust resistance
- Medium/early maturity with stiff straw

SY 517 CL2

AgriPro **syngenta**

- Excellent test weight pattern
- Two-gene Clearfield
- Moderate tolerance to fusarium head blight
- Good winter hardiness and straw strength

LCS ATOMIC AX



- Very good top-end potential
- Earliest CoAXium variety on the market
- Excellent straw strength
- Good stripe rust and low pH tolerance

AP BALDY

AgriPro **syngenta**

- Top forage producer
- Awnless variety, ideal for grazing
- Excellent hessian fly tolerance
- Excellent BYDV tolerance

KS BILL SNYDER



WHEAT
ALLIANCE

- Single Season Use variety
- High Yield Potential
- WSMV and TRIMV Resistance
- High Tillering Capacity

LCS STEEL AX



- CoAXium variety
- Very good straw strength and standability
- Very good FHB Tolerance
- Rated 5 for WSMV
- Drought tolerant with top-end yields

AP24 AX

AgriPro **syngenta**

- Phenomenal yield potential
- Aggressor herbicide tolerant
- Medium maturity
- Very Good wheat streak mosaic virus tolerance

SY WOLF

AgriPro **syngenta**

- Good Cover Crop Option
- Good tillering, drought tolerance, shattering tolerance

T173 FORAGE WHEAT



- High tonnage potential
- Awnless variety, ideal for grazing
- Excellent stay-green
- Tall plant stature with long thin leaves
- Highly tolerant to leaf rust

WHEAT COMPARISON CHART

PRODUCTION SYSTEM

	Golden Hawk ★	High Country ★	Rock Star ★	Paradise ★	AP 24 AX	AP Baldy	AP Prolific	AP Bigfoot	SY Wolverine	LCS Atomic AX	LCS Steel AX	LCS T-173	KS Bill Snyder	KS Providence
Continuous Wheat	4	4	2	1	4	2	2	4	1	5	5	2	2	2
Dual Purpose	4	4	2	2	3	2	2	2	4	5	2	2	7	4
After Soybeans	2	5	2	2	2	5	2	2	2	2	2	2	2	1
After Corn	5	6	5	7	8	5	4	6	7	6	4	8	8	6

AGRONOMICS

	Golden Hawk ★	High Country ★	Rock Star ★	Paradise ★	AP 24 AX	AP Baldy	AP Prolific	AP Bigfoot	SY Wolverine	LCS Atomic AX	LCS Steel AX	LCS T-173	KS Bill Snyder	KS Providence
Herbicide Tolerant	N	N	N	N	Y	N	N	N	N	Y	Y	N	N	N
Awnless	N	N	N	N	N	Y	N	N	N	N	N	Y	N	N
Test Weight	3	2	4	2	3	4	2	1	2	4	3	4	4	2
Straw Strength	2	5	2	3	4	3	5	2	2	2	2	5	2	4
Relative Maturity	6	3	6	4	5	5	4	3	3	3	8	6	5	5
Plant Height	3	4	3	3	6	5	5	4	3	3	7	7	3	7
Winter Hardiness	3	3	3	4	3	3	4	3	3	4	2	4	3	3
Aluminum Tolerance	3	8	2	3	6	7	1	3	8	2	5	-	7	6
Coleoptile Length	5	4	4	4	2	9	2	4	6	7	3	-	5	4

DISEASE & PEST

	Golden Hawk ★	High Country ★	Rock Star ★	Paradise ★	AP 24 AX	AP Baldy	AP Prolific	AP Bigfoot	SY Wolverine	LCS Atomic AX	LCS Steel AX	LCS T-173	KS Bill Snyder	KS Providence
Stem Rust Tolerance	3	3	3	3	3	4	2	2	2	9	8	6	5	4
Leaf Rust Tolerance	2	2	2	3	6	4	2	2	2	5	7	7	4	3
Stripe Rust Tolerance	4	6	2	1	2	6	2	4	6	4	7	7	4	5
Soil Borne Tolerance	2	1	1	1	5	2	1	5	1	3	1	1	1	1
BYDV	4	4	4	6	-	2	4	5	4	6	7	-	5	5
Septoria Leaf Blotch	3	4	3	5	-	4	4	4	2	6	4	-	-	5
Tan Spot	5	5	4	3	5	4	4	5	3	6	-	6	4	4
Powdery Mildew	-	4	4	4	-	-	-	-	6	4	-	5	4	4
Hessian Fly	8	8	8	8	5	2	8	8	8	9	9	9	9	9
Wheat Streak	4	4	4	5	4	5	4	4	4	-	5	-	4	6
FHB	5	6	5	7	8	5	4	6	7	6	4	8	8	6

GENERAL:

1-2 = Excellent
3-4 = Very Good
5-6 = Good
7-8 = Fair
9 = Poor

RELATIVE MATURITY:

1 = Earliest
9 = Latest

PLANT HEIGHT

1 = Shortest
9 = Tallest

COLEOPTILE LENGTH:

1 = Long
9 = Short



★ POLANSKY EXCLUSIVE VARIETY

NOTE: Agronomic ratings updated annually using most recent information from numerous sources

WHEAT TREATMENTS

POLANSKY CEREALS FUNGICIDE

POLANSKY CEREALS WIREWORM

POLANSKY CEREALS APHID

BROAD SPECTRUM FUNGICIDE

Foot rot, root rot bunt smut
and damping off



WIREWORMS

Diseases and insects such as
foot rot, root rot, bunt, smut,
damping off and wireworms



GRAIN APHID & HESSIAN FLY

Control of insects such as wireworm,
grasshopper, Hessian fly and aphids
while protecting seedlings and roots
from range of diseases



Polansky cereals seed treatments are powered by Cruiser 5FS and Vibrance Extreme. Each customized option gives your wheat a level of protection precisely tailored to your farm's environment.

TALC USA

A BRANDT COMPANY

Talc USA offers Regular Talc with Micronutrients or 80/20 Talc with Micronutrients which has 20% Graphite. Fortified with 0.7% Iron and 0.9% Manganese by volume for an increase in yield and plant health. A finer grind using flaked vs morphus Graphite exceeds industry standards; increasing fluency, lubricity and coverage, while decreasing static.

10LB/20LB TALC

- 1 cup to 3 bushels of Seed
- 11 cups to 35 bushels of seed.
- 16 cups to 50 bushels of seed.

10LB/20LB TALC 80/20 GRAPHITE BLEND

- ¼ cup to 80,000 Seeds

MICROSURGE LIQUID INOCULANT:

- 2.5 gallon jugs- Treats 150 units per container
- 275 gallon Shuttle- Treats 16,500 units of soybeans



FORAGE SORGHUM SUDAN



Numbering System

1 1 9
A B

A = Classification

- 1 = Sorghum Sudangrass
- 2 = Male Sterile Forage Sorghum
- 3 = Forage Sorghum
- 4 = Pearl Millet

B = Characteristic

- 1 = Conventional
- 6 = Brown Midrib (BMR)- 6 Gene
- 7 = Brown Midrib Photo-Period Sensitive (BMR PPS)
- 8 = Brown Midrib Dry Stalk (BMR DS)
- 9 = Brown Midrib Brachytic Dwarf (BMR BY)

Brown Midrib (BMR):

Low lignin, highly digestible, top quality sorghum

Brachytic Dwarf (BY):

Reduced internodes with very high leaf to stalk ratios, superior standability and great tonnage

Delayed Maturity (DM):

Allows 25-30 additional growing days prior to heading

Male Sterile (MS):

Produces no anthers and thus no pollen for grain production

Photo-Period Sensitive (PPS):

Plants remain in vegetative growth stage depending on day length and light

Prussic Acid:

Form of hydrocyanic acid in the new regrowth of sorghum-type plants that can cause severe poisoning in livestock

Sugar Cane Aphid Tolerance (SCA):

aphids less prevalent in these varieties

In Vitro True Digestibility (IVDT):

Determination of true digestibility of feeds

Comparison Chart

	Sorghum Sudangrass (Drilled)						Forage Sorghum (Rows)					
Product #	118	119	169	179	189	199	219	269	329	363	399	419
Trait	DM Conv.	Conv.	BMR-6	BMR-6 PPS	BMR-6 DS	BMR BY	Conv.	BMR-6	Conv.	BMR-6	BMR-6	Conv.
Maturity	MF	ME	M	MF-PPS	M	ME	M	M	M	E	MF	M
Average Seed Size	18-22,000	18-22,000	13-15,000	15-17,000	15-18,000	13-15,000	19-20,000	14-18,000	13-15,000	17-19,000	18-20,000	48-50,000
Seeding Rate	20-25 lbs	20-35 lbs	18-30 lbs	18-20 lbs	20-25 lbs	18-25 lbs	5-7 lbs	4-8 lbs	3-9 lbs	3-9 lbs	3-8 lbs	15-25
Height	8'-9'	5'-6'	8'-10'	8'-10'	6'-8'	6'-8'	7'-8'	7'-8'	7'-8'	6'-7'	6'-7'	4'-5
Drought	3	3	4	4	4	3	4	4	1	2	2	2
Regrowth	3	3	2	3	3	3	N/R	5	4	4	3	1
Standability	3	1	4	5	4	4	2	5	2	2	1	1
Usage	H,G	H,G	H,G,S	H,G,S	H,G,S	H,G,S	H,G,S	H,G,S	H,G,S	S,H,G	H,G,S	H,G,S
Nutritional Value	4	4	2	2	2	2	1	1	3	1	1	2

Relative Maturity

E = Early
ME = Medium-Early
M = Medium
MF = Medium-Full
F = Full
PPS = Photoperiod-Sensitive

Usage

H = Hay
G = Grazing
S = Silage

Other Ratings

1 = Excellent
10 = Poor

POLANSKY SORGHUM SUDANGRASS

Our Sorghum Sudan offerings are tailored for our region. This fast growing, multi-cut forage is ideal to add tons to your feed stockpile. With several genetic options available, let us help you select the right product for your farm.

118

- Higher yielding single or multi-cut
- Wide window of harvestability lowers harvest expenses and increases yield
- Increased protein, leafy fine stems
- Delayed maturity trait allows 25-30 additional growing days prior to heading



119

- One of the most dependable and consistent performers on the market
- Excellent for multi-cut hay production
- Fast regrowth
- May begin grazing or baling at 24"-30"
- High leaf to stem ratio
- Thin, sweet juicy stem



169 BMR

- Medium-Full maturing
- Improved digestibility with the BMR-6 trait, low lignin content
- Great option for grazing and haying
- Optimal tonnage and nutritional value even during drought, water shortage and harsh temperatures



179 BMR PPS

- Photo-period sensitive
- Dual purpose: silage or hay
- Extended harvest window
- Good leaf to stem ratio
- SCA tolerant
- High stem sugar content



189 BMR DS

- Dry stalk gene to quicken dry-down, harvestability and quality
- Significant increase in digestibility, palatability and efficiency
- Up to 20% greater than conventional
- One of the first BMR-6 summer annual forage grasses that can out-yield many non BMR hybrids
- Excellent re-growth



199 BMR BY

- BMR-6 gene technology
- Best for hay, grazing and greenchop
- High sugar content
- Up to 50% more leaves
- Rapid re-growth with excellent yields and nutritional values

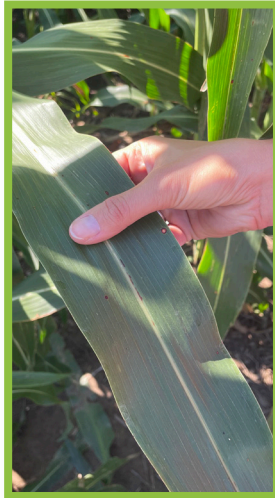


POLANSKY FORAGE SORGHUM

Our Forage sorghum portfolio encompasses all the genetic options available on the market. This drought tolerant, single cut, warm-season grass makes an ideal ration ingredient. Ask our team to help you determine the best option for your program.

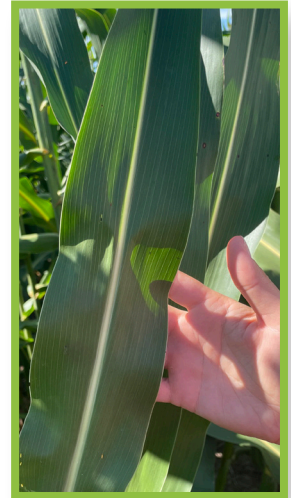
219 MS

- Excellent standability
- High yield potential for single cut hay
- Harvest at heading stage for best sugar content
- Excellent early season vigor
- Excellent Nutritional value
- Exceptional palatability



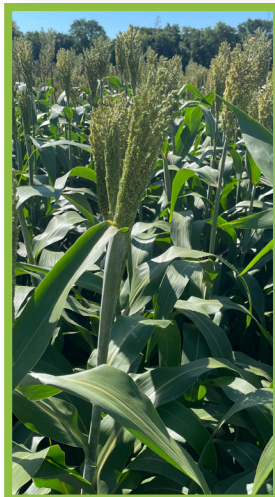
269 MS BMR

- High energy forage crop
- 40% greater IVTD forage quality rating over standard forage sorghum
- Highly digestible and consistent form of quality silage
- Requires 33% less water than corn
- Excellent nutritional value rating



329 SCA

- Conventional hybrid designed for silage production
- Wide leaves produce a dark, dense canopy for superior weed suppression and moisture conservation
- Tall plant with strong stalk for good standability and high silage yield
- High grain-to-stover ratio for increased digestibility



363 BMR

- Short season - double crop after wheat
- Tillering capabilities of this hybrid are unsurpassed, allowing for increased yields and ground cover
- Stacked internodes; short statured- not a true BD
- 90 days to harvest
- Excellent digestibility and palatability and nutritional values



399 BMR BY

- Excellent palatability and standability
- Great leaf volume with close internodes for optimum tonnage
- Best for high quality silage
- High grain to forage ratio
- Brachytic Dwarf
- Good re-growth for late season graze out
- Good IVDT, TDN and NDFD %



419 Pearl Millet

- Does not produce prussic acid
- Produces quick, high yields
- High tolerance to many pathogens and high humidity
- High leaf mass
- SCA tolerant
- Good re-growth for late season graze out
- Excellent tonnage
- Suitable for grazing or haying



POLANSKY GRAIN SORGHUM

Polansky branded conventional grain sorghum varieties are selected specifically to meet criteria set forth by us and our customers. Our portfolio encompasses a broad range of cropping systems and management requirements to fit your specific needs. Our sales team can guide you to finding the right products for your needs.

5420

- Early Maturing
- Well adapted for all high stress environments of the west
- Very good standability, best performance at mid to lower yielding environments



5522

- Medium- Early Maturing
- Highly adaptable to a wide range of yield environments
- Excellent root and stalk strength
- Exceptional tolerance to high stress



5433

- Early Maturing
- Exceptional drought tolerance
- High test weights
- Excellent uniformity



5629

- Medium hybrid with good yield performance and plant type
- Broad adaptation



5512

- Medium- Early Maturing
- Highly suitable in tough dryland, high yield dryland, limited irrigation
- High pH soils and no-till field positioning



5719

- Medium- Full Maturing
- Strong performer at mid to upper yield levels
- Very good stalk and root structure
- Excellent grain color
- Excellent Test Weight



5519

- Very good medium-early maturity, medium height hybrid
- Stable DW3 gene for consistent head height



DOUBLE TEAM™ GRAIN SORGHUM HYBRIDS

Double Team™ Sorghum Cropping Solution with FirstAct™ herbicide empowers you to eliminate those profit and yield-robbing grass weeds in your sorghum crop using a combination of unique trait hybrids with unparalleled over-the-top herbicide controls.

6311DT

- Early Maturing Variety
- Works well in High PH soils
- Very High Yield Rating

6441DT

- Medium-Early Maturity
- Semi-Open head type
- High Yield Emergence Standability Rating

6531DT

- Medium Maturity
- Semi-Compact head type
- Emerges well in cool soils for dryland or irrigated acres

6633DT

- Medium Maturity
- High SCA Tolerance
- Excellent High Yield Environment Performer



All Double Team™ Hybrids are Stable DW3 gene for consistent head height

Grain Sorghum Ranking & Selection Guide

Variety	Stalk Quality	Root Strength	Head Exertion	Days to Mid Bloom	Grain Color	Drought Tolerance	Maturity	Plant Height	Yield Rating	SCA Tolerance
5420	1	2	6-8"	60	Cream	2	E	46-50"	3	Yes
5433	3	1	4-6"	58	Cream	1	E	30-36"	1	Yes
5512	2	1	4-6"	61	White	1	ME	30-36"	2	No
5519	3	1	5-7"	62	Bronze	3	ME	50-54"	4	Yes
5522	1	2	3-5"	64	Bronze	2	ME	44-49"	2	Yes
5629	2	1	3-5"	65	Bronze	3	M	49-53"	2	Yes
5719	2	1	2-4"	70	Red	4	MF	50-54"	1	Yes
6311DT	3	2	5-7"	55	Bronze	2	E	45-52"	3	N/R
6441DT	2	2	2-5"	57	Bronze	3	ME	42-51"	2	N/R
6531DT	2	2	5-7"	62	Bronze	3	M	44-52"	2	N/R
6633DT	1	2	4-6"	65	Bronze	3	M	46-50"	2	Yes

Relative Maturity
E = Early
ME = Medium-Early

M = Medium
MF = Medium-Full
F = Full

Other Ratings
1 = Excellent
10 = Poor



All Varieties Offer Uniform Emergence and Excellent Stalk Strength

CEREALS



Goliath Oats

- Excellent disease resistance package, resistant to crown rust, stem rust, barley yellow dwarf and smut
- Late maturing, tall white oat
- Excellent forage yield
- Plant at $\frac{3}{4}$ " to $1\frac{1}{2}$ " depth at 70-90 lbs/acre
- Top yielding dual purpose in dry conditions



SD Buffalo Oats

- White-hulled, spring oat from SDSU
- 2-5" shorter than Goliath with improved standability and increased leaf production
- Excellent yield potential and high test weight
- Great for grain production/Dual Purpose
- Fast maturing, great standability

Winter & Spring Forage Triticale

- Spring silage option or fall and winter grazing
- Awnletted characteristic, leading to good hay and silage production
- Nutrient mitigation for livestock confinement operations
- High tonnage resulting from spring silage harvest
- Spring Forage Triticale does not require vernalization
- Drought tolerant

Thunder Graze Extra™

- Forage Blend
- Thundercale, winter hardy rye and fast emerging spring triticale and wheat
- Fine stem that aids in feeding and digestibility
- Drought tolerant
- Extended grazing seasons

Winter Barley

- Excellent winter hardiness and yield potential
- Early maturity, high quality forage
- Used for late fall and winter grazing
- Awnletted six-row barley
- Typically harvested early enough to double crop soybeans

Spring Forage Barley

- Two-rowed, hooded hay barley
- Adapted for a wide variety of growing conditions and climates
- Early maturing variety that produces a high yielding and uniform crop
- Fine stem that aids in feeding and digestibility

German Foxtail Millet

- High quality hay in as little as 50 days
- Warm season grass requires soil temperature above 65 degrees
- Harvest at or before boot stage
- Drought tolerant crop

COVER CROPS

		FULL SEEDING RATE LBS/ ACRE	SEEDING DEPTH INCHES	N FIXATION	REDUCTION OF SOIL COMPACTION	WINTER HARDINESS	SEED/#
Warm-Season Legumes	Cowpea	40	1 - 1 1/2	Good	Fair	No	3,600
	Mung Bean	25	1 - 1 1/2	Fair	Fair	No	10,000
	Sunn Hemp*	25	1/2 - 1.0	Excellent	Good	No	15,000
	Laredo Forage Soybean	65	1-1 1/2	Good	Fair	No	3,000
Warm-Season Grasses	Forage Sorghum	10	3/4 - 1.0	-	Good	No	17,200
	Sorghum Sudangrass	20	3/4 - 1.0	-	Good	No	17,200
	German Millet	25	1/2 - 3/4	-	Good	No	220,000
	Pearl Millet	20	1/2 - 3/4	-	Good	No	82,320
	Teff Grass	10	1/4	-	Good	No	1,300,000
Warm-Season Broadleaves	Buckwheat	50	1/2 - 1.0	Poor	-	No	20,400
	Peredovik Sunflower	7	1- 1 1/2	Good	-	No	8,000
Brassicas	Daikon Radish	6	1/4 - 1/2	-	Excellent	No	34,000
	Forage Collards	5	1/4 - 1/2	-	Excellent	Moderate	175,000
	Purple Top Turnip	5	1/4 - 1/2	-	Excellent	No	192,800
	Rapeseed	5	1/4 - 1/2	-	Good	Moderate	156,960
	Winter Camelina	3	1/4 - 1/2	-	Fair	Hardy	400,000
	Brassica Mustard	15	1/4 - 3/5	-	Very Good	Moderate	180,000
Cool-Season Legumes	Berseem Clover	15	1/4 - 1/2	Good	Fair	Moderate	150,000
	Common Vetch*	20	1/2 - 1.0	Good	Fair	Good	8,000
	Crimson Clover	20	1/4 - 1/2	Good	Poor	Hardy	149,760
	Forage Pea	70	1 1/2 - 2	Good	Poor	Hardy	1,800
	Hairy Vetch*	25	1/2 - 1.0	Good	Fair	Hardy	12,000
	Medium Red Clover	10	1/4 - 1/2	Good	Fair	Good	272,160
	Ladino Clover*	5	1/4 - 1/2	Good	Fair	Moderate	776,000
	Winter Pea	35	1 1/2 - 2	Good	Poor	Hardy	1,840
	Yellow Sweet Clover	6	1/4 - 1/2	Fair	Fair	Moderate	260,000
	Sainfoin*	30	1/5 - 1/4	Good	Very Good	Moderate	18,500
	White Dutch Clover	10	1/4	Good	Fair	Hardy	500,000
	Winter Lentils	35	1 - 2	Good	Good	Extremely Hardy	15,000
Non-Legume Forb	Chicory	50	1/2 - 1.0	-	-	No	20,400
Cool-Season Grasses	Annual Ryegrass	18	1/4 - 1/2	-	Fair	No	190,000
	Cereal Rye	85	1 - 1 1/2	-	Fair	Extremely Hardy	18,160
	Spring Barley	75	1 1/2 - 2	-	Fair	No	13,600
	Spring Oat	80	3/4 - 1 1/2	-	Fair	No	19,600
	Spring Triticale	100	1 1/2 - 2	-	Fair	No	22,700
	Winter Barley	100	1 - 1 1/2	-	Fair	Hardy	13,600
	Winter Triticale	100	1 - 1 1/2	-	Fair	Hardy	22,700
	Winter Wheat- Forage Type	100	1 - 1 1/2	-	Fair	Extremely Hardy	11,360



- Add 25-50% for grazing.

*** Can be toxic to livestock.**

COVER CROP BLENDS

Spring Maxx

70% Spring Oats
30% 4010 Forage Peas

- 60 lb/acre seeding rate
- Ideal for early season hay crop or early summer pasture
- As oats grow, peas will climb the oats, vigorously using sunlight to maximize forage potential



Summer Maxx

44% Cowpeas
21% PPS Sorghum
Sudangrass
12% Millet
7% Radishes
7% Forage Collards

- 30 lb/acre seeding rate
- Conserves and improves soil structure by conditioning soil with deep roots
- Captures and fixes nutrients while conserving soil structure, boosts organic matter



Fall Maxx

75% VNS Winter Rye
12.5% Clover
2.5% Purple Top Turnips
5% Rape
5% Radish

- 40-45 lb/acre seeding rate
- Great option for interseeding corn
- Fastest ground cover option, great fall forage
- Early spring green up



Rye Maxx

90% VNS Rye
5% Purple Top Turnips
5% Radishes

- 50- 60 lb/acre seeding rate
- Great blend for winter grazing, over-wintering rye



Oat Maxx

84% Spring Oats
8% Purple Top Turnips
8% Radish

- 30 lb/acre seeding rate
- Will Winter Kill
- Great fall forage option



Wheat Maxx

90% Winter
Wheat (Forage)
5% Purple Top Turnips
5% Radish

- 25-36 lb/acre seeding rate
- Extended grazing option
- Beardless, productive winter grazing



Deer Max

40% Spring Oats
30% 4010 Forage Peas
15% Collards
5% Radishes
5% Purple Top Turnips
5% Rape Seed

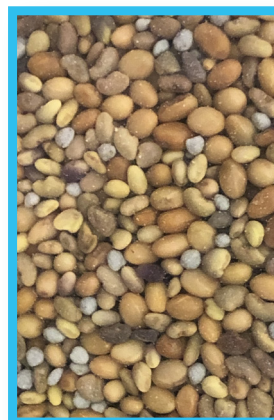
- 40 lb/acre seeding rate
- Provides abundant food sources during transition from summer to winter
- Excellent drought tolerance



Antler Maxx

30% VNS Alfalfa
20% Red Clover
10% Ladino Clover
40% Crimson Clover

- Includes alfalfa, red, ladino and crimson clovers
- Seed in early spring or early fall-cool season
- A mix of high protein forage developed for healthy antler growth
- 20-30 lb./acre seeding rate



Pheasant Maxx

40% Grain Sorghum
30% Forage Sorghum
30% Golden German Millet

- Includes grain sorghum, forage sorghum, and millet
- Seed after soil temperature reaches 60° at 8-10 lb./acre
- Formulated for both food and cover
- Plant late spring/summer for full cover



✓ Custom Blending Available On All Cover Crops

- *Percentages are by weight*
- *All floor stock cover crop blends containing legumes are sold pre inoculated*
- *Please allow 48 hours for formulation of custom blends*
- *Seed treatment and Inoculant for sale individually*
- *We create custom blends to fit all management styles, including but not limited to: Double crop, CRP, Wildlife, New Pasture, Interseeding Pasture*

We have modified our blends to meet multi-state requirements and in doing so, have simplified the names. We will continue to create custom blends and can add additional products to our floor stock blends as needed. For a complete list of cover crop offerings, contact us.

- No Returns on Custom Blends -

ALFALFA

723 POLANSKY ALFALFA

- High yielder with broad adaptation
- Excellent winter hardiness
- High resistance to stem nematodes
- Excellent pest and disease ratings
- 4.0 Fall Dormancy

NEXGROW® 6427R

- Top yield potential with high resistance to stem nematode
- Broadly adapted with excellent winter hardiness
- High multifoliate expression for maximum quality
- Roundup Ready®
- Special Order

6439HVXR NEXGROW® ALFALFA

- Genetically enhance for maximum quality
- UltraCut® alfalfa disease package
- Nematode and Aphid Resistant
- Excellent for poorly drained soils
- Very high leaf to stem ratio
- HARVXTRA® with ROUNDUP READY® technology

6497R NEXGROW® ALFALFA

- Excellent forage quality
- Very good drought stress ratings
- Herbicide-tolerant
- Maximum yields, quality and/or milk per acre
- Closeout Variety

689 POLANSKY ALFALFA

- Excellent forage quality
- Very good drought stress ratings
- Fast recovery after cutting
- Improved stand persistence
- Excellent disease resistance

NEXGROW® 6423R with ULTRACUT™

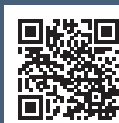
- Top ULTRACUT™ Disease package variety with extreme cold tolerance
- Roundup Ready®
- Excellent stand persistence & forage quality
- Top choice for heavy, compacted, and saturated soils
- Salt tolerance at germination
- High multifoliate expression for maximum quality
- Special Order

NEXGROW® 6441HVXR with ULTRACUT™

- Improved version of 6439 HVXR with industry leading ULTRACUT™ disease resistance, cold tolerance, persistence, and HarvXtra® forage quality.
- The first genetically enhanced alfalfa developed to maximize quality – 15-20% increase in RFQ over conventional checks.
- HarvXtra offers excellent harvest flexibility for optimal balance of quality and yield.
- Roundup Ready®
- Special Order



*We offer a lineup
of common VNS
alfalfa.*



Alfalfa Performance

	689	723	6497 R	6439 HVXR	6423 R	6427 R	6441 HVXR
Full Seeding Rate/Acre	15-20	15-20	20-25	20-25	20-25	20-25	20-25
Fall Dormancy	4	4	4	4.4	4.3	4.1	4.4
Winter Hardiness	2	2	2	1.6	1.4	1	1.6
DRI	34/35	35/35	30/30	39/40	40/40	34/35	39/40
Fusarium Wilt	HR	HR	HR	HR	HR	HR	HR
Phytophthora Root Rot	HR	HR	HR	HR	HR	HR	HR
Bacterial Wilt	HR	HR	HR	HR	HR	HR	HR
Verticillium	HR	HR	HR	HR	HR	HR	HR
Anthracnose Race 1	HR	HR	HR	HR	HR	HR	HR
Anthracnose Race 5	-	-	-	R	-	-	R
Aphanaomyces Race 1	HR	HR	HR	HR	HR	HR	HR
Aphanomyces Race 2	R	HR	-	HR	HR	R	HR
Aphanomyces Evolving Strains	-	-	-	HR	HR	NR	HR
Pea Aphid	R	R	R	R	HR	R	R
Spotted Alfalfa Aphid	R	HR	-	R	R	R	R
Stem Nematode	R	HR	R	R	R	HR	R
Roundup Ready	-	-	Y	Y	Y	Y	Y
HarvXtra	-	-	-	Y	-	-	Y
UltraCut	-	-	-	-	Y	-	Y

**Treatment options include:
No treatment (OMRI), Inoculated
only, and Fungicide & Inoculated**

✓ **Additional treatment
packages offered by special
order.**

ULTRA//CUT™
Alfalfa Disease Package

A stronger disease package and pest protection. The UltraCut alfalfa disease package enables strong stand establishment through unmatched seedling genetic disease resistance. This offers our growers the ability to protect yield and quality potential.

HARVXTRA
with Roundup
Ready® Technology

Line up allows the grower to choose a flexible cutting window. Easily maintain a normal harvest schedule and achieve higher forage quality than with conventional varieties at the same stage of maturity or delay harvest up to 10 days for higher yield potential without sacrificing quality.

NEXGROW

We have broadened our NEXGROW RR portfolio for you, the grower, to choose the combination of traits that best suits your operation.

- Varieties for a weed free field
- Our RR varieties are treated with 34% Nutrient coat, Apron XL™ fungicide, and inoculated with Nitragin Gold™.

GRASSES



Turf Grasses

Polansky Seed has three top-of-the-line Turf Type Fescue grasses that are custom blended to make any lawn look like a plush golf course.

- **Country Estates Plus Turf Type Fescue with 10% Bluegrass**
- **Country Estates Turf Type Fescue**
- **Playground Turf Type Fescue**

Native Grass Blends

West Native Blend

30% El Reno Side Oats
21% Little Bluestem Aldous
19% Western Wheatgrass Barton
10% Kaw Big Bluestem
10% Indiangrass Osage
5% Lovington Blue Grama
5% Blackwell Switchgrass

East Native Blend

26% El Reno Side Oats
25% Indiangrass Osage
24.5 % Kaw Big Bluestem
19.5% Little Bluestem Aldous
5% Blackwell Switchgrass

Lawn, Field & Pasture Options

- Annual Ryegrass
- Best of Blues Bluegrass
- Brome Grass
- Common Bluegrass
- Crabgrass*
- Fawn Tall Fescue (Endophyte Free)*
- Kentucky 31 Tall Fescue
- Orchard Grass
- Pasture Tall Fescue
- Perennial Ryegrass
- Yukon, Monaco Bermudagrass* (25 lb. bucket)
- Chilli Verde Bermudagrass* (50 lb. bag)
- Switch Grass
- Teff Grass
- Timothy Grass*
- White Dutch Clover

Grasses	New Lawn Sowing Rates	Over-Seeding Rates
Fescues	6.0 - 8.0 lbs./1,000 square feet	3.0 - 4.0 lbs./1,000 square feet
Ryegrass	6.0 - 8.0 lbs./1,000 square feet	3.0 - 4.0 lbs./1,000 square feet
Bluegrass	2.0 - 3.0 lbs./1,000 square feet	1.0 - 1.5 lbs./1,000 square feet
Bermudagrass	1.5 - 3.0 lbs./1,000 square feet	.75 - 1.5 lbs./1,000 square feet

*** SPECIAL ORDER REQUESTS ONLY**

LAWN FERTILIZER

FOR ALL SEASONS II - LAWN FOOD + CRABGRASS

- 16 - 0 - 8
- 5,000 - 10,000 sq. ft.
- 20 - 40 lb bag

WEED OUT PRO TURF

- 25 - 0 - 4
- 5,000 - 10,000 sq. ft.
- 13 - 26 lb bag

NEW LAWN STARTER

- 9-13-7
- 5,000-10,000 sq. ft.
- 20- 40 lb bag

LAWN FOOD + IRON

- 24 - 0 - 4
- 5,000 - 10,000 sq. ft.
- 20 - 40 lb bag

GARDEN SEED

We have quality seeds available to get your vegetable, herb and fruit garden started. Live off of your produce when you shop with us!

SCAN THE CODE
for detailed list of inventory



SUNFLOWERS

Sunflowers are a unique crop that give growers the opportunity to sell in several different markets. But what hybrid is right for your operation? Whether it is high oleic, NuSun®, conoil, or confection, Nuseed has locally bred hybrids developed to perform in your field.



HIGH OLEIC NuSUN
CONFECTION CONOIL



*We Offer a Full
Lineup of NuSeed*

MORE OPTIONS

We also offer Corn and Soybeans through Mustang Seeds and Golden Harvest. Contact a Sales Representative today to learn more!





Polansky Seed, Inc.
2729 M Street
Belleville, KS 66935

polanskyseed.com | 785-527-2271



@PolanskySeed



@PolanskySeedInc

*Scan to Connect
with our Sales
Team Today!*

